

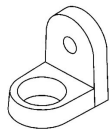
8L16-DEKA

SPECIFICATIONS

Nominal Voltage (V)	6V
Capacity at C/100	420Ah
Capacity at C/20	370Ah
Weight	113 lbs. (51 kg)
Operating Temperature Range	-22°F (-30°C) - 122°F (50°C)

For Charging Parameters please refer to www.mkbattery.com
Click on Technical Data, then on Photovoltaic Charging Parameters in the PV/Solar section

Terminal T875



Made in the U.S.A. by East Penn Manufacturing Co., Inc.

Distributed by:

Flooded Battery, Wet type

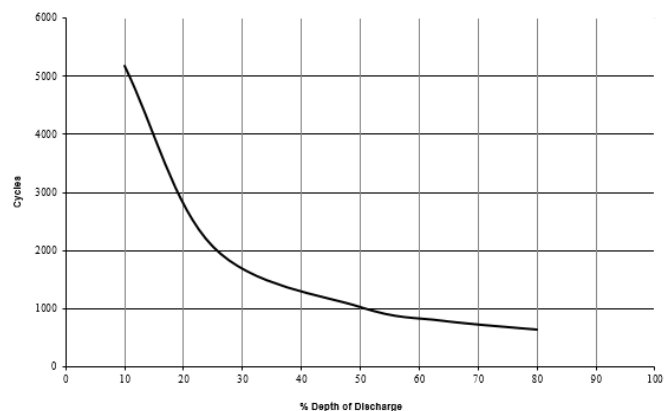


DIMENSIONS

Inches (mm)

Length	11.72 (298 mm)
Width	7.00 (178 mm)
Height	16.27 (412 mm)

Cycle Life vs Depth of Discharge at 25°C (77°F)



MK Battery

1631 South Sinclair Street • Anaheim, California 92806

Toll Free: 800-372-9253 • Fax: 714-937-0818 • E-mail: sales@mkbattery.com

